

## CHEMICAL INJECTION PUMP OVERVIEW

MORGAN-SiA CHEMICAL INJECTION  
PUMPS & SYSTEMS

# MORGAN PRODUCTS

PNEUMATIC CHEMICAL PUMPS FOR THE GAS AND OIL INDUSTRIES

## HD Series Injectors

Model (No Timer)	Plunger Displacement	Pump Ratio	Stroke Length in - cm.	Connections All NPT Input/Output	Maximum Discharge PSI - BAR	Output Per Hour Gal. / Lts.
HD187	.2 cc	10:1	1/2 - 1.27	1/4 -M / 1/8-F	1000 - 68.9	.01 - .12 / .05 - .46
HD187-3K	.2 cc	30:1	1/2 - 1.27	1/4 -M / 1/8-F	3000 - 206	.01 - .12 / .05 - .46
HD187M	.2 cc	10:1	1/2 - 1.27	1/4 -M / 1/8-F	1000 - 68.9	.005 - .12 / .02 - .46
HD187-3KM	.2 cc	30:1	1/2 - 1.27	1/4 -M / 1/8-F	3000 - 206	.005 - .12 / .02 - .46
HD312	1.0 cc	10:1	1.0 - 2.54	1/4 -M / 1/4-F	1000 - 68.9	.06 - .63 / .24 - 2.4
HD312M	1.0 cc	10:1	1.0 - 2.54	1/4 -M / 1/4-F	1000 - 68.9	.01 - .63 / .05 - 2.4
HD312-3K	1.0 cc	30:1	1.0 - 2.54	1/4 -M / 1/4-F	3000 - 206	.06 - .63 / .24 - 2.4
HD312-3KM	1.0 cc	30:1	1.0 - 2.54	1/4 -M / 1/4-F	3000 - 206	.01 - .63 / .05 - 2.4
HD312-5K	1.0 cc	50:1	1.0 - 2.54	1/4 -M / 1/4-F	5000 - 344	.06 - .63 / .24 - 2.4
HD312-5KM	1.0 cc	50:1	1.0 - 2.54	1/4 -M / 1/4-F	5000 - 344	.01 - .63 / .05 - 2.4
HD562	3.5 cc	10:1	1.0 - 2.54	1/2 -M / 1/4-F	1000 - 68.9	.25 - 2.5 / 1 - 9.5
HD562M	3.5 cc	10:1	1.0 - 2.54	1/2 -M / 1/4-F	1000 - 68.9	.06 - 2.5 / .24 - 9.5
HD562-3K	3.5 cc	30:1	1.0 - 2.54	1/2 -M / 1/4-F	3000 - 206	.25 - 2.5 / 1 - 9.5
HD562-3KM	3.5 cc	30:1	1.0 - 2.54	1/2 -M / 1/4-F	3000 - 206	.06 - 2.5 / .24 - 9.5
HD562-5K	3.5 cc	50:1	1.0 - 2.54	1/2 -M / 1/4-F	5000 - 344	.25 - 2.5 / 1 - 9.5
HD562-5KM	3.5 cc	50:1	1.0 - 2.54	1/2 -M / 1/4-F	5000 - 344	.06 - 2.5 / .24 - 9.5
HD1062	12.8 cc	10:1	1.0 - 2.54	3/4-M / 1/2-F	1000 - 68.9	1 - 10.4 / 3.9 - 39
HD1062-3K	12.8 cc	30:1	1.0 - 2.54	3/4-M / 1/2-F	3000 - 206	1 - 10.4 / 3.9 - 39
HD2000	135.8 cc	6:1	3.1 - 7.87	NOTE / 3/4-F	900 - 62	8.1 - 81.3 / 30.7 - 307

Notes:

All pumps require **TR1** timing relay, **TR2** timing relay or electric solenoid valve.

HD1062, HD1062-3K requires **SR1S** snap action relay.

HD2000 requires **SR2S** snap action relay.

Maximum stroke rate for all pumps is 50 SPM. Exception HD2000 35SPM.



**Solar Injection**  
AUSTRALIA

Tel:- +61 7 3379 5321

Fax:- +61 7 3379 5189

[info@solarinjection.com.au](mailto:info@solarinjection.com.au)

[www.solarinjection.com.au](http://www.solarinjection.com.au)

# MORGAN PRODUCTS

PNEUMATIC CHEMICAL PUMPS FOR THE GAS AND OIL INDUSTRIES

## Pneumatic Diaphragm Injectors

Model (No Timer)	Diaphragm Displacement	Pump Ratio	Diaphragm Size in - cm.	Connections All NPT Input/Output	Maximum Discharge PSI - BAR	Output Per Hour Gal. / Lts.
D10-316	.8 cc	1:1	1 - 2.5	1/4 -M / 1/4-M	125 - 8.6	.06 - .63 / .24 - 2.4
D10-PVC	.8 cc	1:1	1 - 2.5	1/4 -M / 1/4-F	125 - 8.6	.06 - .63 / .24 - 2.4
D15-316	6.6 cc	1:1	1.5 / 3.8	1/4 -M / 1/4-M	125 - 8.6	.5 - 5.2 / 2 - 20
D15-PVC	6.6 cc	1:1	1.5 / 3.8	1/4 -M / 1/4-F	125 - 8.6	.5 - 5.2 / 2 - 20
D25-316	21.2 cc	1:1	2.5 / 6.4	1/2 -M / 1/2-M	125 - 8.6	2 - 17 / 6.3 - 63
D25-PVC	21.2 cc	1:1	2.5 / 6.4	1/2 -M / 1/2-F	125 - 8.6	2 - 17 / 6.3 - 63
D40-316	51.0 cc	1:1	4 / 10	3/4 -M / 3/4-M	125 - 8.6	3 - 30 / 11 - 114
D40-PVC	51.0 cc	1:1	4 / 10	3/4 -M / 3/4-F	125 - 8.6	3 - 30 / 11 - 114

Notes:

All pumps require **TR1** timing relay, **TR2** timing relay or electric solenoid valve.

All pumps are shipped with mounting stand.

Maximum stroke rate for all pumps is 50 SPM.



**Solar Injection**  
AUSTRALIA

Tel:- +61 7 3379 5321

Fax:- +61 7 3379 5189

[info@solarinjection.com.au](mailto:info@solarinjection.com.au)

[www.solarinjection.com.au](http://www.solarinjection.com.au)

# MORGAN PRODUCTS

PNEUMATIC CHEMICAL PUMPS FOR THE GAS AND OIL INDUSTRIES

## Pneumatic Chemical Injectors

Model (No Timer)	Plunger Displacement	Pump Ratio	Stroke Length in - cm.	Connections All NPT Input/Output	Maximum Discharge PSI - BAR	Output Per Hour Gal. / Lts.
55DS	.2 cc	54:1	3/4 - 1.91	1/4 -M / 1/4-F	8100 - 558	.01 - .12 / .05 - .46
125 / 125DS	.8 cc	31:1	1 - 2.54	1/4 -M / 1/4-F	4650 - 320	.06 - .63 / .24 - 2.4
225 / 225DS	.8 cc	69:1	1 - 2.54	1/4 -M / 1/4-F	10000 - 689	.06 - .63 / .24 - 2.4
325 / 325DS	.8 cc	122:1	1 - 2.54	1/4 -M / 1/4-F	15000 - 1034	.06 - .63 / .24 - 2.4
425 / 425DS	.8 cc	217:1	1 - 2.54	1/4 -M / 1/4-F	15000 - 1034	.06 - .63 / .24 - 2.4
235 / 235DS	1.8 cc	31:1	1 - 2.54	1/4 -M / 1/4-F	4650 - 320	.15 - 1.5 / .55 - 5.5
335 / 335DS	1.8 cc	54:1	1 - 2.54	1/4 -M / 1/4-F	8100 - 558	.15 - 1.5 / .55 - 5.5
435 / 435DS	1.8 cc	97:1	1 - 2.54	1/4 -M / 1/4-F	10000 - 689	.15 - 1.5 / .55 - 5.5
275 / 275DS	3.2 cc	17:1	1 - 2.54	1/2 -M / 1/4-F	2550 - 175	.25 - 2.5 / .95 - 9.5
375 / 375DS	3.2 cc	31:1	1 - 2.54	1/2 -M / 1/4-F	4650 - 320	.25 - 2.5 / .95 - 9.5
475 / 475DS	3.2 cc	54:1	1 - 2.54	1/2 -M / 1/4-F	8100 - 558	.25 - 2.5 / .95 - 9.5
3755 / 3755DS	7.2 cc	14:1	1 - 2.54	3/4 -M / 1/2-F	2100 - 144	.56 - 5.6 / 2.1 - 21
4755 / 4755DS	7.2 cc	24:1	1 - 2.54	3/4 -M / 1/2-F	3600 - 248	.56 - 5.6 / 2.1 - 21
3500 / 3500DS	12.8 cc	8:1	1 - 2.54	3/4 -M / 1/2-F	1200 - 83	1 - 10 / 3.9 - 39
4500 / 4500DS	12.8 cc	14:1	1 - 2.54	3/4 -M / 1/2-F	2100 - 144	1 - 10 / 3.9 - 39
880DS	19.7 cc	31:1	2 - 5.10	3/4 -M / 1/2-F	4650 - 320	1.1 - 11 / 4.1 - 41
1255DS	40.0 cc	14:1	2 - 5.10	1-1/2-M / 3/4-F	2100 - 144	2.2 - 22 / 8.4 - 84
5500DS	154.0 cc	6:1	3.1 - 7.87	1-1/2-M / 3/4-F	900 - 62	9 - 90 / 34 - 341
8500DS	154.0 cc	14:1	3.1 - 7.87	1-1/2-M / 3/4-F	2100 - 144	9 - 90 / 34 - 341

Notes:

All pumps require **TR1** timing relay, **TR2** timing relay or electric solenoid valve.

All 400 and 4000 series pumps require **SR1S** snap action relay.

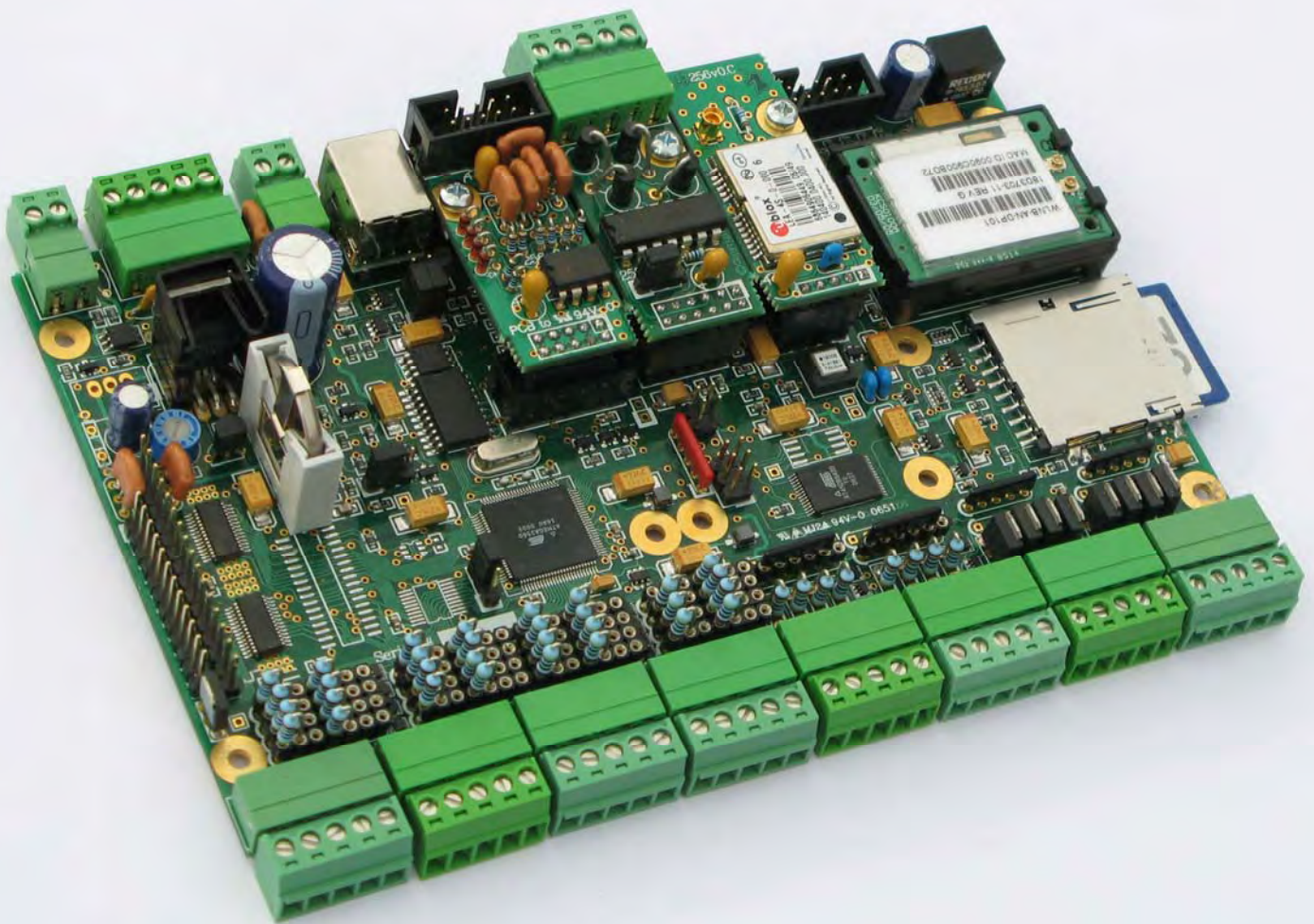
Model 800DS, and larger require **SR2S** snap action relay.

Maximum stroke rate for all pumps is 50 SPM. Exception 800DS and larger 35 SPM.



**Solar Injection**  
AUSTRALIA

Tel:- +61 7 3379 5321  
Fax:- +61 7 3379 5189  
[info@solarinjection.com.au](mailto:info@solarinjection.com.au)  
[www.solarinjection.com.au](http://www.solarinjection.com.au)



Solar Injection Australia has a complete end to end solution to the remote monitoring and control of assets located beyond the reach of terrestrial telephony systems. To achieve this, we utilise the ORBCOMM Satellite system and our *iSAT* PC user interface and *SiA* intelligent modems.